

Killara Station Upgrade

Transport Access Program

November 2023



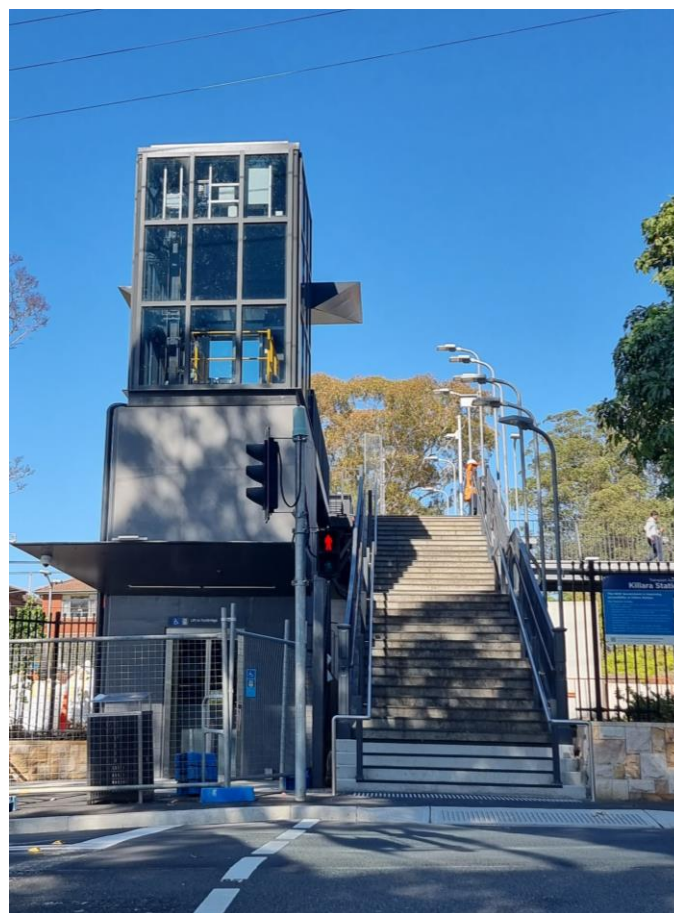
Transport for NSW acknowledges the people of the Darug and Guringai Nations as the Traditional Custodians of the lands on which we work and pays respect to Elders past and present.

Accessibility upgrade complete

The new amenities as part of the Killara Station Upgrade are now open.

These upgrades have been delivered as part of the Transport Access Program providing a station more accessible to people with a disability, limited mobility, parents/carers with prams and passengers with luggage. The upgraded facilities and improved accessibility features now available include:

- three lifts with canopy coverage – one on each side of the footbridge, and one to the station platforms
- extended pedestrian footbridge connecting the new lifts
- new family accessible toilet and a unisex ambulant toilet
- new canopy at the boarding assistance zone on Platform 1
- footpath upgrades on Werona Avenue and Culworth Avenue
- upgrades to stairs on Werona Avenue and Culworth Avenue including new handrails
- upgrades and new tactile ground surface indicators on platforms
- two new deflection walls – one on each side of the rail corridor
- formalised accessible parking, and kiss and ride parking on Culworth Avenue
- power supply upgrades to support new infrastructure
- improvements to lighting, ticketing facilities, CCTV and station communications.



Finishing work

Although the main upgrade is complete you may continue to see construction staff on site until March 2024 while minor finishing work takes place. This includes some additional electrical and landscaping activities, as well as work on the deflection walls in the rail corridor.

Thank you to the community

We would like to thank the local community in Killara for their continued support and co-operation while we upgraded the station.

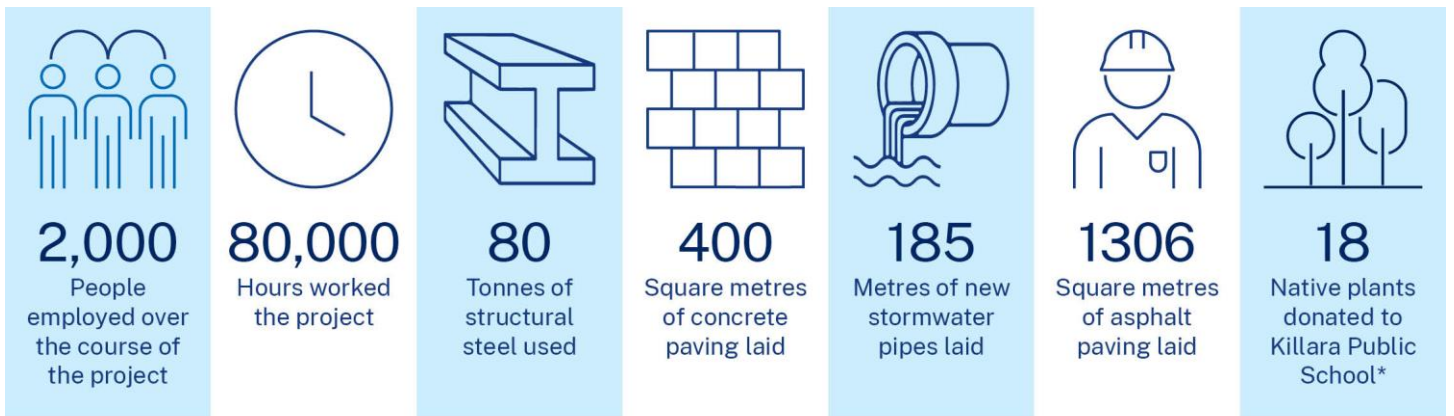


Station upgrade open to passengers



Above: New station facilities open to the public (L) and tree after being replanted to celebrate National Tree Day in July with Killara Public School (R)

Fun facts



*As part of National Tree Day 2023

Contact us



Project Infoline **1800 684 490**
24-hour Construction Response Line
1800 775 465



projects@transport.nsw.gov.au



PO Box K659,
Haymarket NSW 1240



transport.nsw.gov.au/killara



For the latest traffic updates:

Call 132 701, visit [livetraffic.com](https://www.livetraffic.com) or download the app Live Traffic NSW



Interpreter service

For languages other than English call 131 450
Arabic • Greek • Hindi • Mandarin • Vietnamese

لطلب خدمة الترجمة الشفهية للغات غير الإنجليزية اتصل
بالرقم **131 450**

Για υπηρεσίες διερμηνείας σε άλλες γλώσσες εκτός από
τα Αγγλικά καλέστε το **131 450**

अंग्रेज़ी के अतिरिक्त अन्य भाषाओं के लिए दुभाषिया सेवा
131 450 पर कॉल करें

获取英语以外的其他语言口译协助服务可以致电**131 450**

Để có dịch vụ thông ngôn cho các ngôn ngữ khác tiếng
Anh, gọi số **131 450**