

Community Connect



Bankstown community • May 2024



Transport is keen to hear from our local communities. We want to understand what is important to you when it comes to transport and getting around in your local area.

Get Active NSW transport project, wombat crossing at Shellcote Road, Greenacre. From left to right: Richard Kopp, Council Road Safety Officer, Mark Shume, Principal of Greenacre Catholic College and Canterbury-Bankstown Mayor Bilal El-Hayek with Greenacre Catholic College school kids walking over the new wombat crossing.

Tell us what you think!



Scan the QR code to find out more about transport in the Bankstown area.



Transport for NSW acknowledges the Dharug people of the Eora Nation as the Traditional Custodians of the lands on which we work and pays respect to Elders past and present.





Why we are asking for your opinion?

Transport is keen to hear from the community about transport issues that matter to you.

Transport will use your feedback to help us understand how to make your journeys better.

Did you know?



Final conversion of the T3 Sydenham to Bankstown line of up to 12 months (starting between July and October 2024). Including: installing platform screen doors, Metro train testing and commissioning activities.



Transport will introduce a new rail timetable in 2024 to support the closure of the T3 Bankstown Line between Sydenham and Bankstown. The new timetable will include changes for current T3 Bankstown Line stations not converting to metro, as well as changes for other lines across the network.



During the T3 conversion period, Transport will deliver a comprehensive, high-frequency bus plan to keep passengers moving.



Over 500 new commuter car parking spaces now available across Riverwood and Revesby commuter car parks.



Transport will resurface 11 kms of road along Canterbury Road and Old Canterbury Road from March 2024.



Transport is providing \$4 million in funding to Canterbury – Bankstown Council to deliver 17 walking and cycling projects within the Canterbury – Bankstown area.



Need help planning your trip?

Visit transportnsw.info/trip or download the Tripview app.

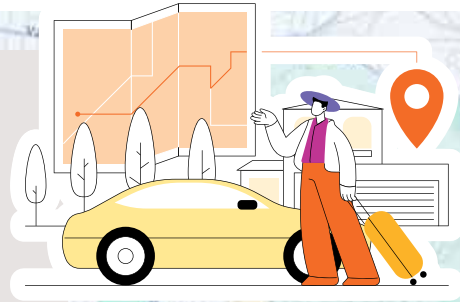
What's happening in your area?

Henry Lawson Drive Upgrade

The NSW Government is upgrading Henry Lawson Drive to reduce congestion and improve safety and connectivity.

The upgrade is being carried out in stages to focus on key areas of congestion and to minimise impact to motorists and the community along the corridor.

The Henry Lawson Drive Upgrade Program includes the Georges Hall Upgrade between Beale Street and Rabaul Road, Georges Hall, Stage 1A between Tower Road, Bankstown Aerodrome and Auld Avenue, Milperra, and Stage 1B between Auld Avenue and the M5 Motorway, Milperra.



Sydney Metro – Sydenham to Bankstown

The Sydney Metro City and Southwest project includes the conversion of the T3 Bankstown Line (between Sydenham and Bankstown) to metro standards.



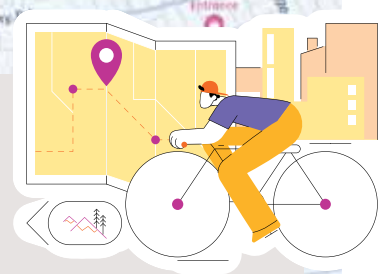
Canterbury Road Improvement Project

Road surfacing works will be carried out along several sections of Canterbury Road and Old Canterbury Road from March 2024.

Active Transport

The NSW Government wants walking and bike riding, known as active transport, to be the preferred way to make short trips and a viable, safe and efficient option for longer trips.

Various walking and cycling improvements planned at the following locations:
Fore Street, Earlwood
Wardell Road, Earlwood
Bayview Avenue, Earlwood
Charles Street (new foot bridge), Canterbury
Phillips Avenue, Canterbury



Improving transport services and infrastructure in your area

Sydney Metro – Sydenham to Bankstown

Southwest customers will have access to a fast metro train every four minutes in the peak periods, and fully accessible stations and services.

Active Transport projects

The Get NSW Active program provides local councils with funding for projects that create safe, easy and enjoyable walking and cycling trips. Some recently completed projects include raised pedestrian crossings near local schools at Shellcoate Road in Greenacre and Miller Street in Kingsgrove. With more than 580,000 children going to school in the Canterbury –Bankstown area, these improved walking and cycling projects help ensure students and their families travel safely.

Henry Lawson Drive Georges Hall

Henry Lawson Drive upgrades were completed in early 2023 to reduce congestion on this busy corridor.

Revesby and Riverwood Commuter Car Parks

The Riverwood Commuter Car Park and Revesby Commuter Car Park extension are now complete. This includes:

- 385 additional parking spaces at Revesby
- 142 additional parking spaces and roof top solar panels at Riverwood
- new accessible parking spaces
- extension of lift, stairs and internal ramps to the additional upper levels
- CCTV, lighting and signage for improved safety
- provision for future electric vehicle charging points.

Tell us what you think!



Scan the QR code to find out more about transport in the Bankstown area.



Thank you

Thank you to everyone who took the time to provide feedback. This feedback will help to inform future Transport projects across Canterbury –Bankstown.



Contact us

For enquiries, complaints or feedback, our team will remain available via the contact details below.



Project Infoline **1800 684 490**



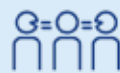
projects@transport.nsw.gov.au



[www.transport.nsw.gov.au/
community-connect](http://www.transport.nsw.gov.au/community-connect)



Sydney Metro
24-hour community info line: **1800 171 386**



Interpreter service

For languages other than English call **131 450**
Arabic • Greek • Hindi • Mandarin • Vietnamese

لطلب خدمة الترجمة الشفهية للغات غير الإنجليزية اتصل
بالرقم 131 450

Για υπηρεσίες διερμηνείας σε άλλες γλώσσες εκτός από
τα Αγγλικά καλέστε το **131 450**

अंग्रेजी के अतिरिक्त अन्य भाषाओं के लिए दुभाषिया सेवा
131 450 पर कॉल करें

获取英语以外的其他语言口译协助服务可以致电**131 450**

Để có dịch vụ thông ngôn cho các ngôn ngữ khác tiếng
Anh, gọi số **131 450**